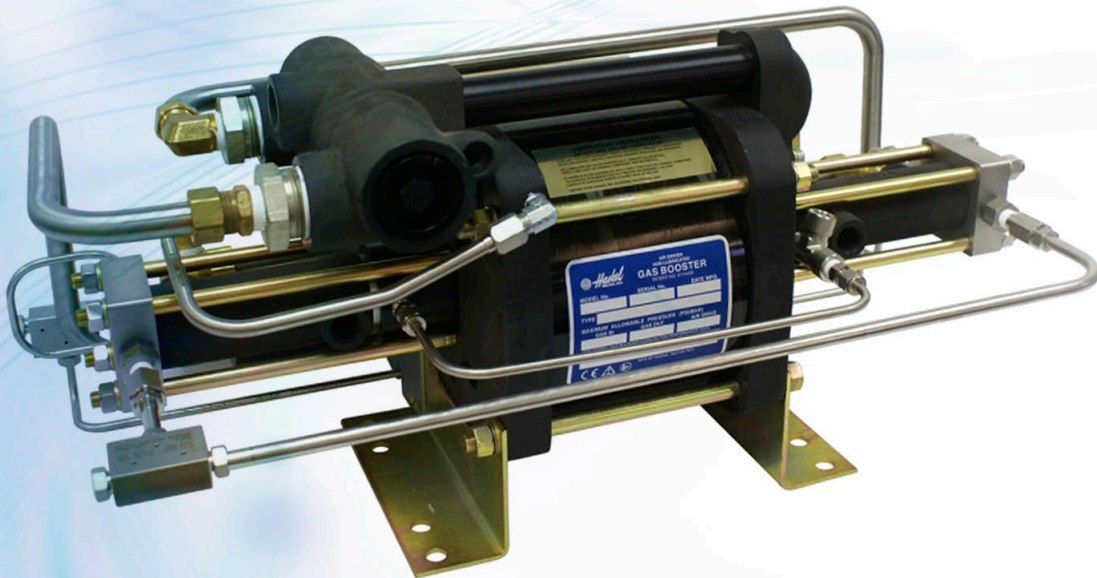




## Hydrogen Transfer & Handling Equipment



PERFORMANCE · QUALITY · RELIABILITY

# High-Pressure Hydrogen Handling Equipment & Expertise

Haskel manufactures a full range of Hydrogen handling equipment, including hydraulic and pneumatic-driven gas boosters, high-pressure valves and fittings, and system components.

We specialize in high-pressure technology and offer an extensive background of knowledge and experience with Hydrogen applications, backed with a solid reputation for providing a superior product, known for quality and reliability.

## Markets and Applications

- Hydrogen Fueling & Filling Stations
- Hydrogen Compression, Storage and Transfer
- Hydrogen Generation
- Proof Test; Catalyst Optical Fiber
- R&D Lab Gas Distribution
- Semiconductor Manufacturing
- Vessel Proof Testing
- Fuel Cell: Mobile, Portable & Stationary

We use specific materials designed for Hydrogen use based on pressure and flow requirements to address embrittlement issues metals face when exposed to a hydrogen environment. Embrittlement can be aggravated by high-pressure and hydrogen purity, leading to loss of ductility, and component failure at much lower stress levels than would normally be expected.

## H-Drive - Hydraulic Driven Gas Boosters

### Superior Design and Integration

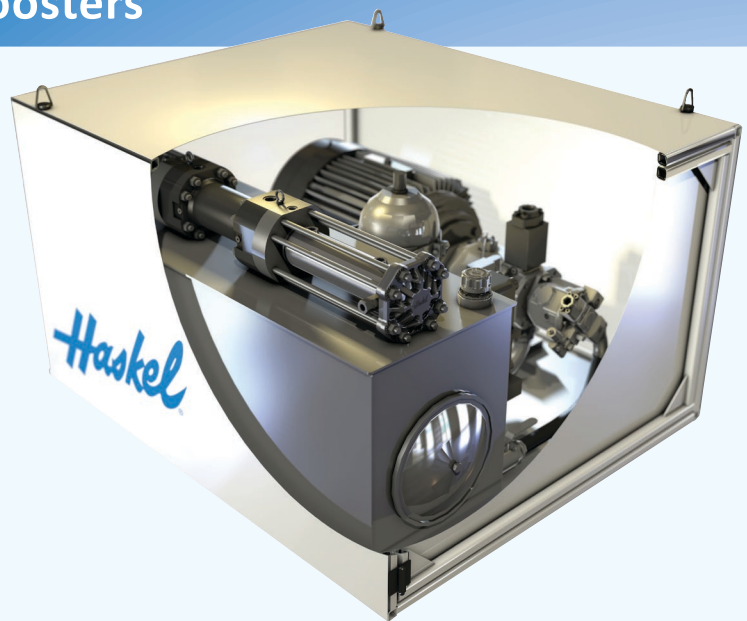
The H-Drive gas booster series sets the standard for functionality and reliability. The modular design is available in single booster units or integrated into a complete skid assembly.

### Applications

Designed primarily for Hydrogen Gas Compression, the booster is ideal for hydrogen high-pressure gas storage and refueling, and delivers everything you have come to expect from the world's leader in high-pressure generation.

### Features and Benefits

- Designed for hydrogen gas service
- Range of modular double acting single stage and two stage models allow compression up to 14,500 psi (1,000 bar)
- Reliable seal design for extended life
- CE Marked and ATEX certified for the European market
- Designed for simple and easy maintenance



- High efficiency design for minimal energy

### Capacity Range – Hydrogen Refueling

Designed for flows from 25kg/day up to 1000 kg/day.

Flow capacity dependent upon application

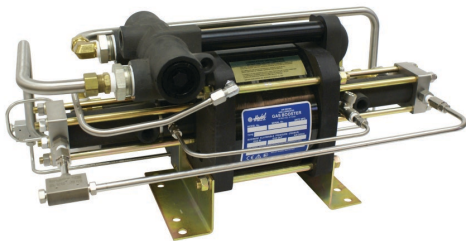
### Flow Rate

Flow rate is nominal, dependent on inlet and outlet pressures.

# Pneumatic Driven Gas Boosters

## Safe Operation with Optimal Performance

Designed with precipitation hardened stainless steel gas barrels, and high pressure gas seals for optimal seal performance at pressure ranges above 5,000 psi (345 bar).



## Features and Benefits

- Vent ports combined into one outlet for safe operation with Hydrogen
- Gas barrels are dates stamped for recommended 7-year replacement
- Supplied with Test Certification
- Integrated systems available

## 5.75" Air Drive Models

Base Booster Model No.	Hydrogen Maximum		Supply Pressure	Flow SCFM @ psi*	Hydrogen Model No.
	PSI	BAR			
AG-30	4500	310	800	3.04 @ 2800	
AG-62	9000	620	1000	4.21 @ 4800	86979
AG-75	11250	775	1500	3.81 @ 6000	86980
AG-152	15000	1034	2000	3.02 @ 12000	86981
AGD-7	2500	172	150	6.85 @ 710	86982
AGD-15	4000	276	500	10.68 @ 1700	86983
AGD-30	9000	620	750	8.12 @ 3150	86984
AGD-32	4000	276	750	10.75 @ 3150	86985
AGD-62	9000	620	1000	6.97 @ 5800	86986
AGD-75	15000	1034	1500	6.18 @ 7500	86987
AGD-152	15000	1034	2000	5.07 @ 14000	86988
AGT-7/15	2500/4000	172/276	100	2.63 @ 1410	86989
AGT-7/30	2500/9000	172/620	100	2.30 @ 2820	86990
AGT-14/62	2500/9000	172/620	250	5.8 @ 4000	86991
AGT-15/30	4000/9000	276/620	500	5.88 @ 3400	86992
AGT-15/75	4000/12000	276/827	250	2.34 @ 7250	86993
AGT-30/75	9000/12000	620/827	500	2.70 @ 7250	86994
AGT-32/62	4000/9000	276/620	1000	8.08 @ 6800	86995
AGT-32/152	4000/15000	276/1034	350	1.93 @ 13750	86996
AGT-62/152	9000/15000	620/1034	1000	3.80 @ 14500	86997

Based on 100 psi Drive Pressure and 48 SCFM (Pa=100, Qa=48)

## 8" Air Drive Models

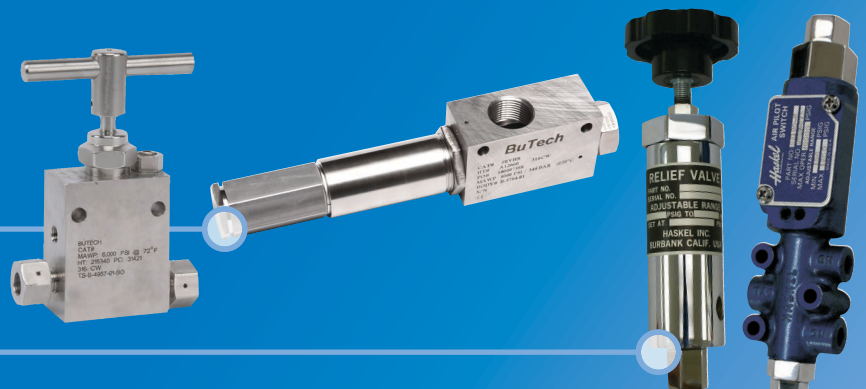
Base Booster Model No.	Hydrogen Maximum		Supply Pressure	Flow SCFM @ psi*	Hydrogen Model No.
	PSI	BAR			
8AGD-14	5000	345	150	9.20 @ 980	87219
8AGD-30	5000	345	750	14.26 @ 3150	87201
8AGD-60	5000	620	1000	9.47 @ 5800	87185
8AGT-14/30	5000	345	500	10.73 @ 3400	87226
8AGT-14/60	9000	620	250	3.87 @ 6000	87225
8AGT-30/60	9000	620	1000	10.4 @ 6800	87224

Based on 100 psi Drive Pressure and 95 SCFM (Pa=100, Qa=95)

## Accessory Components

Valves and Fittings Hydrogen rated to 20,000 PSI (1380 bar) Available in annealed 316SS and A286

Components for System Control



**For more information on our high-pressure products,  
visit [Haskel.com](http://Haskel.com) or contact your local Haskel representative.**



*Haskel* is part of Ingersoll Rand. Ingersoll Rand (NYSE:IR) advances the quality of life by creating comfortable, sustainable and efficient environments. Our people and our family of brands— including Club Car®, Ingersoll Rand®, Thermo King® and Trane®—work together to enhance the quality and comfort of air in homes and buildings; transport and protect food and perishables; and increase industrial productivity and efficiency. We are committed to a world of sustainable progress and enduring results.

A large, stylized, blue cursive logo for "Haskel" with a registered trademark symbol (®) at the end.